

## Debunking debt disaster

Myths may be important to folklore, but they're not helpful in finance. We look at the facts behind some of the common myths surrounding the U.S. national debt.

Atul Bhatia, CFA | Page 4



### Also in this issue



GLOBAL EQUITY  
**Watchful and cautious,  
but invested**



GLOBAL FIXED INCOME  
**The beat goes on**



KEY FORECASTS

Produced: Nov. 1, 2024, 09:00 ET; Disseminated: Nov. 1, 2024, 10:30 ET

For important and required non-U.S. analyst disclosures, see [page 13](#).

Investment and insurance products offered through RBC Wealth Management are not insured by the FDIC or any other federal government agency, are not deposits or other obligations of, or guaranteed by, a bank or any bank affiliate, and are subject to investment risks, including possible loss of the principal amount invested.

## Contents

- 4 Monthly focus | Debunking debt disaster**  
Myths may be important to folklore, but they're not helpful in finance. We look at the facts behind some of the common myths surrounding the U.S. national debt.
  
- 7 Global equity | Watchful and cautious, but invested**  
Given the majority of stocks are moving in sync with the broad averages, supported by expectations for solid earnings growth, we think an investment portfolio should stay put (for now) with a commitment to equities at or near its long-term target weight relative to fixed income.
  
- 9 Global fixed income | The beat goes on**  
Central banks have continued their rate-cutting cycles, some at a faster pace than planned. However, markets are keeping a close eye on Federal Reserve action or inaction.

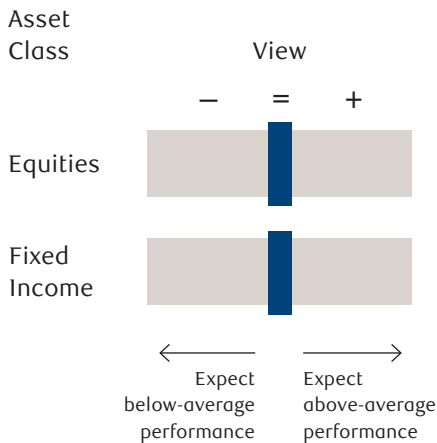
---

## In the markets

- 3 RBC's Investment Stance**
- 11 Key forecasts**

## RBC'S INVESTMENT Stance

### Global asset class views



(+/-/-) represents the Global Portfolio Advisory Committee's (GPAC) view over a 12-month investment time horizon.

**+ Overweight** implies the potential for better-than-average performance for the asset class or for the region relative to other asset classes or regions.

**= Market Weight** implies the potential for average performance for the asset class or for the region relative to other asset classes or regions.

**- Underweight** implies the potential for below-average performance for the asset class or for the region relative to other asset classes or regions.

Source - RBC Wealth Management

### Equities

- The S&P 500 and Canada's TSX posted new all-time highs in October, while European, UK, and Japanese markets have done no better than tread water since the spring. Favorable economic data, including upward revisions to jobs growth and solid retail sales, increased the probability of the U.S. economy achieving a soft landing. A resilient U.S. earnings outlook, global central banks embarking on their rate-cutting cycle, and a majority of stocks participating in the advance of most broad averages continue to leave a Market Weight position in global equities as the most appropriate positioning for the coming year.
- A much more aggressive stance may not be warranted, in our view. Investor sentiment shows signs of complacency while lofty equity valuations in the U.S. suggest the market is pricing in a continuation of above-average earnings growth. While we are constructive on global equities, we believe a watchful approach is called for. We would focus on companies with a resilient business, manageable balance sheets, and strong cash flows which enable them to pay and grow dividends.

### Fixed income

- Global bond yields have recovered from the lowest levels of the year in September. The average yield on the Bloomberg Global Aggregate Bond Index has risen to 3.6% but remains lower than the April high of 4.1%. While many central banks continued with rate cuts in October, markets have pared back what were deep rate cut expectations in September for the Federal Reserve. We continue to anticipate further rate cuts from most major central banks this year, but that the Fed may proceed more cautiously than the rest.
- Global inflationary pressures continue to improve after a brief uptick to start the year, allowing central banks' focus to shift to economic growth and labor market concerns from inflation. After turning cautious on yields and extending duration due to the drop in yields in September, we believe the recent rise in yields provides another opportunity for investors to put money to work. In the U.S., however, we think there may be some modest upside risk remaining for yields through November due to the elections, so some patience may be warranted.
- We reiterate our Market Weight stance on U.S. fixed income with yields remaining above multi-decade averages. Globally, we favor sovereign bonds over corporate bonds as we think valuations in the latter remain relatively rich.

---

MONTHLY  
Focus



**Atul Bhatia, CFA**  
Minneapolis, United States  
atul.bhatia@rbc.com

## Debunking debt disaster

Myths may be important to folklore, but they're not helpful in finance. We look at the facts behind some of the common myths surrounding the U.S. national debt.

The U.S. government has an incomprehensible amount of debt. The number is so large—\$35 trillion and counting—that we think it has lost any meaning. We find it incredible that Treasury debt to other U.S. government agencies—if broken out as a standalone—would itself be the third-most indebted nation on Earth, after the U.S. and Japan. Interest on the debt will soon be a trillion-dollar expense, larger than U.S. government spending on veteran benefits, education, and transportation combined.

The magnitude of these numbers has created a cottage industry of doom forecasting, with plenty of hyperbole but little analysis. We have previously [discussed](#) what we see as the realities of the U.S. national debt, but we think it's helpful to take another look at some of the more pernicious and persistent debt myths.

### **Myth #1: The U.S. economy is dangerously overleveraged**

The biggest source of confusion that we see on the U.S. debt is that the number tells us something important. It doesn't—at least not by itself. That's because the government is only a small part of the U.S. economy. What matters for macroeconomic purposes is how much all stakeholders, public and private, have borrowed. And when we layer in household and corporate borrowing, it's apparent that the U.S. debt picture is relatively benign. Canadians, for instance, have leveraged more of their future production than Americans have, and U.S. borrowing is on par with Sweden and the UK.

Worrying about government debt is analogous to someone claiming to be debt free because they paid off last month's credit card bill. That's a tough argument if the person still has a mortgage, car loan, or student debt. Whether at the household or the national level, we're unlikely to reach the right conclusion if we only look at one slice of the pie.

### **Myth #2: Investors need to prepare for an upcoming U.S. default**

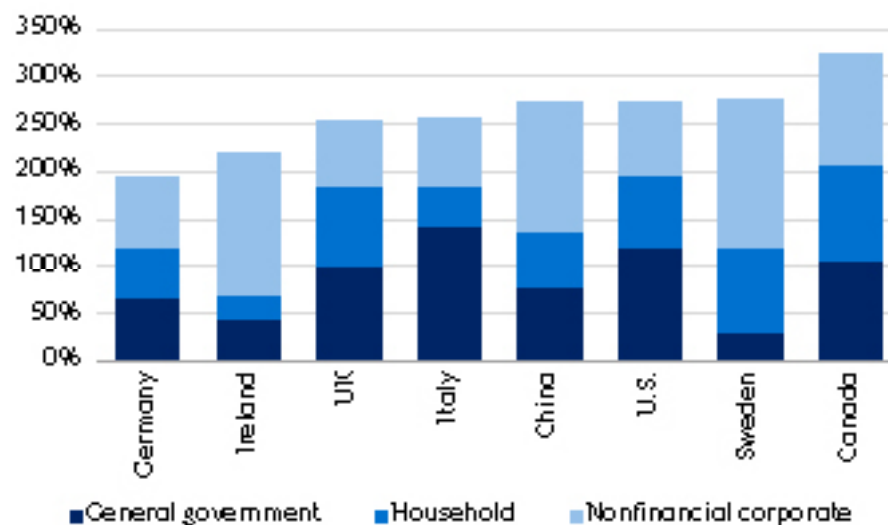
Defaults generally occur when borrowers lack the resources to fulfill their promises. That's not likely to happen for the U.S. government, since the Treasury has only promised to give investors a set number of dollars at specified future dates. By happy coincidence, the U.S. government can manufacture dollars at the push of a button. In those circumstances, it would be an active choice for the U.S. to fail to meet its obligations. And given the lifespan of political careers after a sovereign default, we think it's a choice U.S. leadership is not going to make.

As we've discussed [before](#), the legitimate concern around excess borrowing is not default but inflation. The dollars will be paid as promised, but investors won't be able to buy as much with the proceeds. This is a

## DEBUNKING DEBT DISASTER

### Not so very different after all: A broader measure of indebtedness shows the U.S. is fairly typical

Debt as percentage of 2022 national GDP



Source - International Monetary Fund; percentage of 2022 GDP including bonds, loans, and debt securities

genuine risk. But it's a much different concern than default. Sovereign defaults are economic catastrophes for most strata of society and tend to precede years of slow growth. Inflation is a serious problem, but it's easier to deal with and usually orders of magnitude less severe than defaults.

### Myth #3: Blame the politicians, they're the ones in control

The prevailing narrative is that profligacy created our debts. Whether its crazy spending programs or unfunded tax cuts, debt is just a result of poor political leadership.

To be fair, there's an element of truth to that view. Raising taxes is a political no-go, and there are certain programs that must be funded. Unfortunately, the uncuttable program costs exceed the un-raiseable tax proceeds. That's a structural political issue, and it's likely here to stay for the foreseeable future.

But the reality is the big run-up in government borrowing hasn't been a result of political will. The biggest increases are from the global financial crisis and the pandemic. Without those two events, the U.S. debt-to-GDP ratio would likely be around 40 points lower. It's difficult to argue, in our view, that politicians really had a choice when COVID struck or when the banking system veered toward collapse.

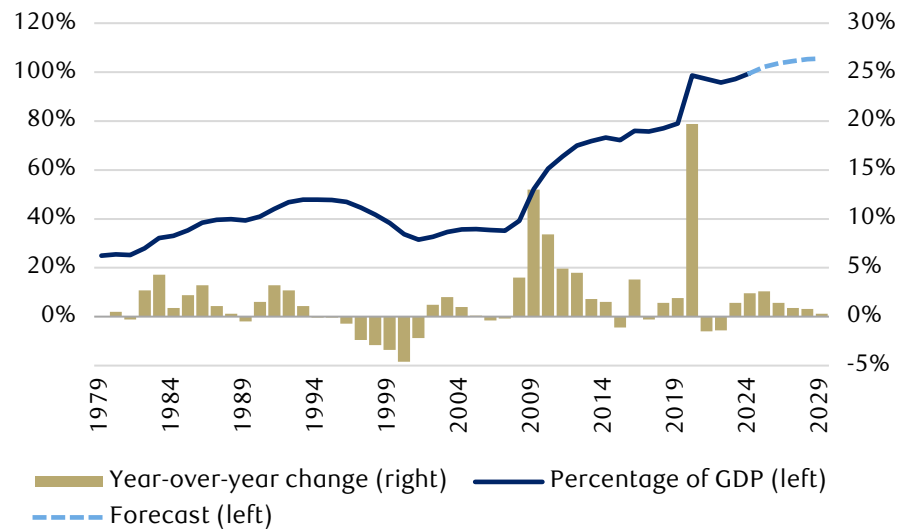
This again highlights the point that the government is only a relatively small part of the economy. If we look back to the last U.S. budget surplus in the 1990s, there were movements to control spending and raise taxes, but a major driver of the surplus was the rise of the internet and the concurrent economic growth.

Debt reduction is less about annual fiscal budget tightening than about avoiding catastrophes and reaping the fruits of innovation.

## DEBUNKING DEBT DISASTER

### U.S. debt rise is driven by crisis response

Federal debt held by the public



Source - RBC Wealth Management, Bloomberg; 2024 and later represents Bloomberg consensus forecast

### Myth #4: Reducing debt will make everything better right away

The old adage to “be careful what you wish for since you just might get it” is particularly apt when it comes to investors and government debt reduction.

The rise in U.S. government debt has been accompanied by solid investment returns across most—if not all—asset classes. Debt-funded government spending played a real role in those results. At its core, debt is about moving demand through time; borrowing adds to today’s demand and repayment reduces today’s demand. If the U.S. were to shift to debt reduction, it’s very likely that economic growth—and by extension corporate earnings—would decline, at least in the short term. Investor optimism around lower debt could help offset some of the effects of slower growth, but there is little empirical support for that idea.

### Reality check

Despite the scary and oft-repeated headlines around U.S. debt, we struggle to see what keeps the fear going. Equity markets are at or near all-time highs; borrowing costs across the economy are largely manageable; and economic growth is strong with inflation declining. This has largely been the case for the U.S. for most of the past four decades, a period marked by rising government debt.

Is every dollar of U.S. government spending efficient? Of course not. Could tax policy be made more rational and do a better job of fomenting growth? Absolutely. But it’s a far cry from saying the world is not ideal to saying that we are on the verge of an economic apocalypse. To us, that leap, like much of the discussion on the U.S. debt, is better suited to economic mythology than financial reality.

GLOBAL  
Equity

# Watchful and cautious, but invested



**Jim Allworth**  
Vancouver, Canada  
jim.allworth@rbc.com

Three horses have dropped out of the global equity market race, at least for now, as the MSCI Europe, MSCI UK, and (Japan) TOPIX indexes all last posted new highs in the spring. European and UK markets have slowed to a walk ever since, while Japan looks to have slipped into a downtrend.

Meanwhile, the S&P 500 and Canada’s TSX posted new highs last month as did the unweighted version of the S&P 500 and the advance-decline lines for both the S&P 500 and the Dow Jones Industrial Average. As long as these latter measures of “market breadth” keep making new highs alongside the capitalization-weighted S&P 500, it’s reasonable to think the uptrend for the U.S. blue-chip index could have further to run.

U.S. equity valuations—never a reliable short-term timing tool—remain rich by historical standards at 24x consensus estimated earnings of \$242 per share and 21x projected 2025 earnings of \$275. They can get richer still, and we think they may do so as long as the 2025 earnings outlook does not fall apart. That will depend on the economy for which there are conflicting expectations.

### U.S. consumers split

The U.S. consumer has differing views on the economic outlook depending on income. The top 40%, buoyed by much-better job security, appreciating stock prices, and rising home values have been the main positive force behind solid increases in consumer spending. Roughly speaking, the top 40% account for about 60% of consumer outlays.

The bottom 60% of income earners have been losing confidence in the near-term prospects for the economy since the beginning of the year (although long-term expectations remain mostly positive). That profile

### Equity views

Region	Previous	Current
Global	=	=
United States	=	=
Canada	=	=
Continental Europe	=	=
United Kingdom	-	-
Asia (ex Japan)	=	=
Japan	+	=

+ Overweight; = Market Weight; - Underweight  
Source - RBC Wealth Management

of declining confidence looks very much like the path of the National Federation of Independent Business’ (NFIB) Small Business Optimism Index. Small and medium-sized businesses account almost 60% of private sector jobs in the United States. We think it’s not surprising that the mood of the owners of those businesses looks a lot like the mood of their employees.

So small business optimism (or lack of it) maps onto consumer confidence and onto the (related) willingness of workers to voluntarily quit their jobs in search of a better-paying one: the so-called “quit rate” continues to plunge as employed workers cast a wary eye on the rising unemployment rate and the steady increase in continuing unemployment claims since the beginning of the year.

Rate cutting by the Federal Reserve may eventually improve this confidence picture but so far credit card loan rates and car loan rates remain sky high at 23% and 8.5%, respectively, up dramatically from two years ago. The rate on short-term business loans clocked in at a punishing 10% per annum in the latest NFIB survey.

For the stock market, the all-important earnings outlook has been more or less holding together,

---

## GLOBAL EQUITY

although both the 2024 estimate and the 2025 projection are fractionally off their recent peaks. RBC Capital Markets, LLC Chief U.S. Equity Strategist Lori Calvasina has characterised the Q3 earnings season to date as “underwhelming.”

For our part, we think an investment portfolio should retain a commitment to equities at or near its long-term target weight relative to fixed income. What would persuade us to become more defensively-minded would be the major stock market indexes rising to a succession of further new highs amidst a backdrop of some combination of a breakdown in market breadth, a prolonged stretch of unbridled investor optimism, and/or a shift in policy that fundamentally and materially weakened the prospects for earnings growth.

We remain watchful and cautious, but invested.



GLOBAL  
Fixed income



**Thomas Garretson, CFA**  
Minneapolis, United States  
tom.garretson@rbc.com

# The beat goes on

Global central bank rate-cut cycles not only continued in October, some banks even accelerated the pace of easing. The European Central Bank (ECB) cut rates for the third time since June, bringing its primary policy rate down to 3.25% from 4.00%. The guidance was equally dovish as ECB President Christine Lagarde continued to downplay further inflationary risks, while highlighting growing economic concerns.

We expect the ECB to continue cutting into H1 2025 as policymakers appear keen to get policy rates back to a more “neutral” setting, and rapidly so, which we judge to be around 2.25%. From there the debate will likely be whether to move rates lower and into an expansionary setting based on the evolution of the economic data.

Not to be outdone, the Bank of Canada upped the pace of its ongoing rate-cutting cycle, delivering an outsized 50 basis points (bps) cut in October, bringing its policy rate down to 3.75%, from the peak level of 5.00% in June. Policymakers highlighted that inflation has fallen below 2%, and while further cuts are likely, they noted that economic growth is expected to improve in 2025.

## Fixed income views

Region	Gov't bonds	Corp. credit	Duration
United States	+	-	7-10
Canada	+	=	3-7
Continental Europe	+	=	3-7
United Kingdom	+	=	3-7

+ Overweight; = Market Weight; - Underweight  
Source - RBC Wealth Management

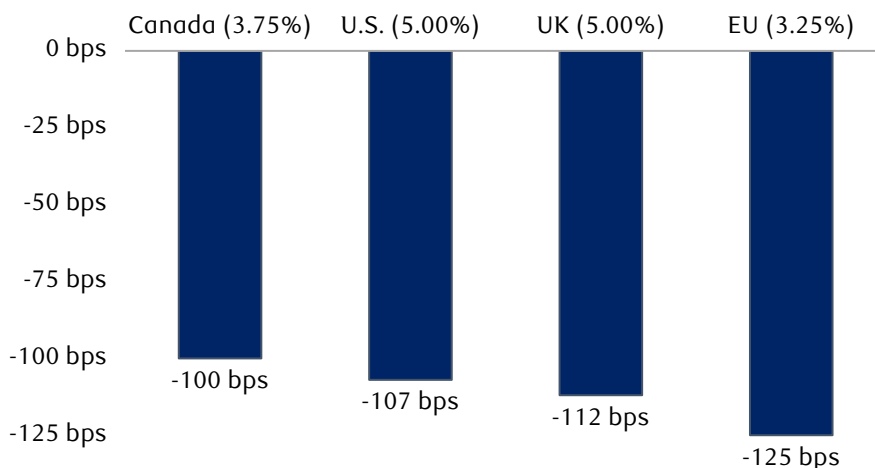
However, RBC Capital Markets isn't so sure. It now expects another 50 bps rate cut in December as urgency is likely to grow over getting rates back to neutral, which it now views as a lower level of 2% from 3% previously, and possibly even lower amid what it expects to be a softer economic backdrop.

But where many global central banks have their feet firmly on the policy-easing accelerator as inflation wanes and growth concerns rise, markets are increasingly thinking the Federal Reserve could tap the brakes after just one rate cut.

After the Fed's September decision to cut rates by a larger-than-expected

## Market expectations for rate cuts through June 2025

Based on policy rates as of 10/23/24 (in parentheses)



Source - RBC Wealth Management, Bloomberg

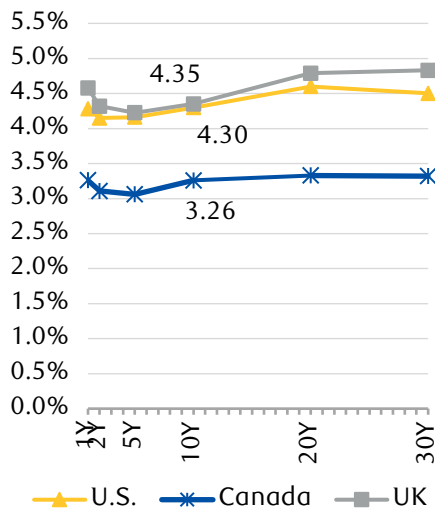
## GLOBAL FIXED INCOME

50 bps, markets had priced nearly 200 bps of further reductions through June 2025—that has already been pared back to just 100 bps. Better economic data, and signs that the U.S. economy could actually be gathering steam amid a weaker global backdrop, have been the primary drivers.

We still expect the Fed to cut by another 25 bps this month, but it may take a more cautious approach to further easing from there compared

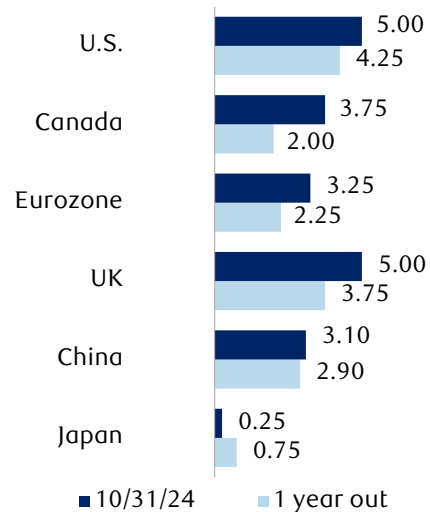
to its global counterparts. While most central banks now appear to be on autopilot with respect to lowering rates to less restrictive levels, continued U.S. economic strength could mean the Fed’s path forward is more nuanced and subject to greater volatility, as markets are left to price “will they, won’t they” scenarios ahead of each upcoming meeting.

### Sovereign yield curves



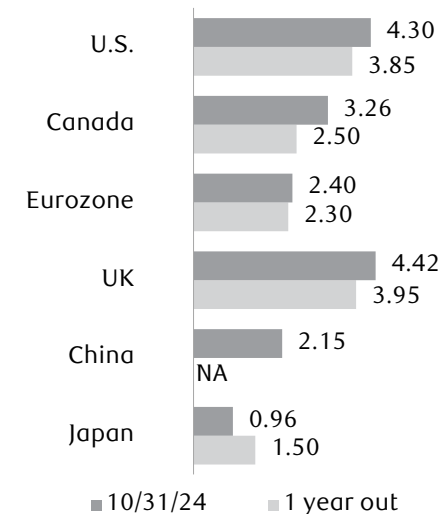
Source - Bloomberg; data through 10/30/24

### Central bank rates (%)



Source - RBC Investment Strategy Committee, RBC Capital Markets forecasts, Global Portfolio Advisory Committee, RBC Global Asset Management

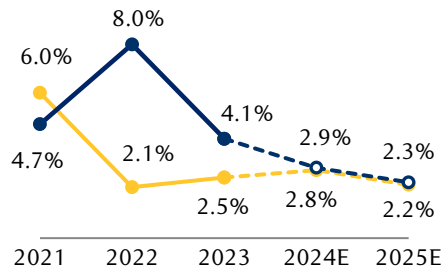
### 10-year rates (%)



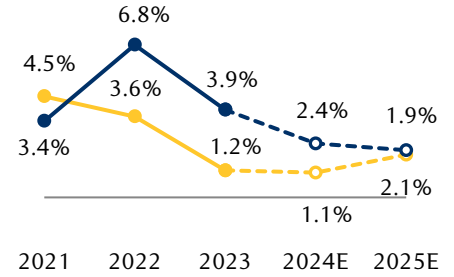
Note: Eurozone utilizes German Bunds. Source - RBC Investment Strategy Committee, Global Portfolio Advisory Committee, RBC Global Asset Management

# KEY Forecasts

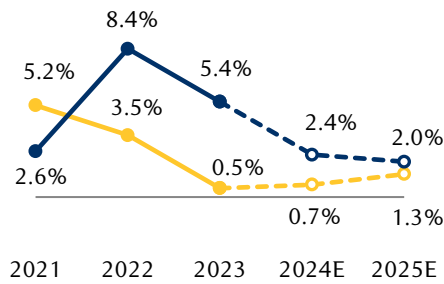
## United States



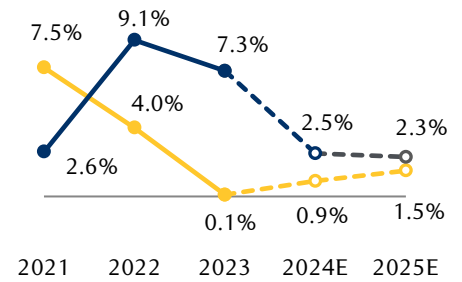
## Canada



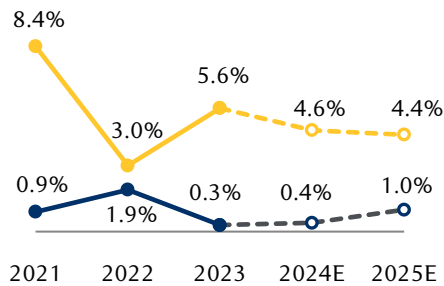
## Eurozone



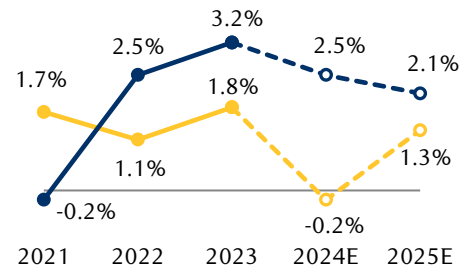
## United Kingdom



## China



## Japan



—●— Real GDP growth

—●— Inflation rate

Source - RBC Investment Strategy Committee, RBC Capital Markets, Global Portfolio Advisory Committee, RBC Global Asset Management, Bloomberg consensus estimates

## Research resources

This document is produced by the Global Portfolio Advisory Committee within RBC Wealth Management's Portfolio Advisory Group. The RBC Wealth Management Portfolio Advisory Group provides support related to asset allocation and portfolio construction for the firm's investment advisors / financial advisors who are engaged in assembling portfolios incorporating individual marketable securities.

The Global Portfolio Advisory Committee leverages the broad market outlook as developed by the RBC Investment

Strategy Committee (RISC), providing additional tactical and thematic support utilizing research from the RISC, RBC Capital Markets, and third-party resources.

The RISC consists of senior investment professionals drawn from individual, client-focused business units within RBC, including the Portfolio Advisory Group. The RISC builds a broad global investment outlook and develops specific guidelines that can be used to manage portfolios. The RISC is chaired by Daniel Chornous, CFA, Chief Investment Officer of RBC Global Asset Management Inc.

---

### Global Portfolio Advisory Committee members

**Jim Allworth** – Co-chair  
Investment Strategist, RBC Dominion Securities Inc.

**Kelly Bogdanova** – Co-chair  
Portfolio Analyst, RBC Wealth Management Portfolio Advisory Group U.S., RBC Capital Markets, LLC

**Frédérique Carrier** – Co-chair  
Managing Director & Head of Investment Strategy, RBC Europe Limited

**Mark Bayko, CFA** – Head, Portfolio Management, RBC Dominion Securities Inc.

**Luis Castillo** – Fixed Income Portfolio Advisor, RBC Wealth Management Portfolio Advisory Group, RBC Dominion Securities Inc.

**Rufaro Chiriseri, CFA** – Head of Fixed Income, British Isles, RBC Europe Limited

**Janet Engels** – Head, RBC Wealth Management Portfolio Advisory Group U.S., RBC Capital Markets, LLC

**Thomas Garretson, CFA** – Fixed Income Senior Portfolio Strategist, RBC Wealth Management Portfolio Advisory Group, RBC Capital Markets, LLC

**Patrick McAllister, CFA** – Manager, Equity Advisory & Portfolio Management, RBC Wealth Management Portfolio Advisory Group, RBC Dominion Securities Inc.

**Josh Nye** – Fixed Income Portfolio Advisor, RBC Wealth Management Portfolio Advisory Group, RBC Dominion Securities Inc.

**Alan Robinson** – Senior Portfolio Advisor, RBC Wealth Management Portfolio Advisory Group – U.S. Equities, RBC Capital Markets, LLC

**Michael Schuette, CFA** – Multi-Asset Portfolio Strategist, RBC Wealth Management Portfolio Advisory Group U.S., RBC Capital Markets, LLC

**David Storm, CFA, CAIA** – Chief Investment Officer, British Isles & Asia, RBC Europe Limited

**Yuh Harn Tan** – Head of Discretionary Portfolio Management & UHNW Solutions, Royal Bank of Canada, Singapore Branch

**Joseph Wu, CFA** – Portfolio Manager, Multi-Asset Strategy, RBC Dominion Securities Inc.

---

### Additional Global Insight contributors

**Atul Bhatia, CFA** – Fixed Income Portfolio Strategist, RBC Wealth Management Portfolio Advisory Group, RBC Capital Markets, LLC

# Required disclosures

## Analyst Certification

All of the views expressed in this report accurately reflect the personal views of the responsible analyst(s) about any and all of the subject securities or issuers. No part of the compensation of the responsible analyst(s) named herein is, or will be, directly or indirectly, related to the specific recommendations or views expressed by the responsible analyst(s) in this report.

## Important Disclosures

In the U.S., RBC Wealth Management operates as a division of RBC Capital Markets, LLC. In Canada, RBC Wealth Management includes, without limitation, RBC Dominion Securities Inc., which is a foreign affiliate of RBC Capital Markets. This report has been prepared by RBC Capital Markets which is an indirect wholly-owned subsidiary of the Royal Bank of Canada and, as such, is a related issuer of Royal Bank of Canada.

## Non-U.S. Analyst Disclosure

One or more research analysts involved in the preparation of this report (i) may not be registered/qualified as research analysts with the NYSE and/or FINRA and (ii) may not be associated persons of the RBC Wealth Management and therefore may not be subject to FINRA Rule 2241 restrictions on communications with a subject company, public appearances and trading securities held by a research analyst account.

In the event that this is a compendium report (covers six or more companies), RBC Wealth Management may choose to provide important disclosure information by reference. To access current disclosures, clients should refer to <https://www.rbccm.com/GLDisclosure/PublicWeb/DisclosureLookup.aspx?EntityID=2> to view disclosures regarding RBC Wealth Management and its affiliated firms. Such information is also available upon request to RBC Wealth Management Publishing, 250 Nicollet Mall, Suite 1800, Minneapolis, MN 55401-1931.

## RBC Capital Markets Distribution of Ratings

For the purpose of ratings distributions, regulatory rules require member firms to assign ratings to one of three rating categories – Buy, Hold/Neutral, or Sell – regardless of a firm's own rating categories. Although RBC Capital Markets' ratings of Outperform (O), Sector Perform (SP), and Underperform (U) most closely correspond to Buy, Hold/Neutral and Sell, respectively, the meanings are not the same because RBC Capital Markets' ratings are determined on a relative basis.

## Distribution of ratings – RBC Capital Markets Equity Research As of September 30, 2024

Rating	Count	Percent	Investment Banking Services Provided During Past 12 Months	
			Count	Percent
Buy [Outperform]	858	57.39	290	33.80
Hold [Sector Perform]	599	40.07	153	25.54
Sell [Underperform]	38	2.54	3	7.89

## Explanation of RBC Capital Markets Equity Rating System

An analyst's "sector" is the universe of companies for which the analyst provides research coverage. Accordingly, the rating assigned to a particular stock represents solely the analyst's view of how that stock will perform over the next 12 months relative to the analyst's sector average.

**Outperform (O):** Expected to materially outperform sector average over 12 months. **Sector Perform (SP):** Returns expected to be in line with sector average over 12 months.

**Underperform (U):** Returns expected to be materially below sector average over 12 months. **Restricted (R):** RBC policy precludes certain types of communications, including an investment recommendation, when RBC is acting as an advisor in certain merger or other strategic transactions and in certain other circumstances. **Not Rated (NR):** The rating, price targets and estimates have been removed due to applicable legal, regulatory or policy constraints which may include when RBC Capital Markets is acting in an advisory capacity involving the company.

**Risk Rating:** The Speculative risk rating reflects a security's lower level of financial or operating predictability, illiquid share trading volumes, high balance sheet leverage, or limited operating history that result in a higher expectation of financial and/or stock price volatility.

## Valuation and Risks to Rating and Price Target

When RBC Capital Markets assigns a value to a company in a research report, FINRA Rules and NYSE Rules (as incorporated into the FINRA Rulebook) require that the basis for the valuation and the impediments to obtaining that valuation be described. Where applicable, this information is included in the text of our research in the sections entitled "Valuation" and "Risks to Rating and Price Target", respectively.

The analyst(s) responsible for preparing this research report have received (or will receive) compensation that is based upon various factors, including total revenues of RBC Capital Markets, and its affiliates, a portion of which are or have been generated by investment banking activities of RBC Capital Markets and its affiliates.

## Other Disclosures

Prepared with the assistance of our national research sources. RBC Wealth Management prepared this report and takes sole responsibility for its content and distribution. The content may have been based, at least in part, on material provided by our third-party correspondent research services. Our third-party correspondent has given RBC Wealth Management general permission to use its research reports as source materials, but has not reviewed or approved this report, nor has it been informed of its publication. Our third-party correspondent may from time to time have long or short positions in, effect transactions in, and make markets in securities referred to herein. Our third-party correspondent may from time to time perform investment banking or other services for, or solicit investment banking or other business from, any company mentioned in this report.

RBC Wealth Management endeavors to make all reasonable efforts to provide research simultaneously to all eligible clients, having regard to local time zones in overseas jurisdictions. In certain investment advisory accounts, RBC Wealth Management or a designated third party will act as overlay manager for our clients and will initiate transactions in the securities referenced herein for those accounts upon receipt of this report. These transactions may occur before or after your receipt of this report and may have a short-term impact on the market price of the securities in which transactions occur. RBC Wealth Management research is posted to our proprietary Web sites to ensure eligible clients receive coverage initiations and changes in rating, targets, and opinions in a timely manner. Additional distribution may be done by sales personnel via e-mail, fax, or regular mail. Clients may also receive our research via third-party vendors. Please contact your RBC Wealth Management Financial Advisor for more information regarding RBC Wealth Management research.

**Conflicts Disclosure:** RBC Wealth Management is registered with the Securities and Exchange Commission as a broker/dealer and an investment adviser, offering both brokerage and investment advisory services. RBC Wealth Management's Policy for Managing Conflicts of Interest in Relation to Investment Research is available from us on our website at <https://www.rbccm.com/GLDisclosure/PublicWeb/DisclosureLookup.aspx?EntityID=2>. Conflicts of interests related to our investment advisory business can be found in Part 2A Appendix 1 of the Firm's Form ADV or the RBC Advisory Programs Disclosure Document. Copies of any of these documents are available upon request through your Financial Advisor. We reserve the right to amend or supplement this policy, Part 2A Appendix 1 of the Form ADV, or the RBC Advisory Programs Disclosure Document at any time.

The authors are employed by one of the following entities: RBC Wealth Management USA, a division of RBC Capital Markets, LLC, a securities broker-dealer with principal offices located in Minnesota and New York, USA; RBC

Dominion Securities Inc., a securities broker-dealer with principal offices located in Toronto, Canada; Royal Bank of Canada, Hong Kong Branch, which is regulated by the Hong Kong Monetary Authority and the Securities and Futures Commission ("SFC"); Royal Bank of Canada, Singapore Branch, a licensed wholesale bank with its principal office located in Singapore; and RBC Europe Limited, a licensed bank with principal offices located in London, United Kingdom.

## Third-party Disclaimers

The Global Industry Classification Standard ("GICS") was developed by and is the exclusive property and a service mark of MSCI Inc. ("MSCI") and Standard & Poor's Financial Services LLC ("S&P") and is licensed for use by RBC. Neither MSCI, S&P, nor any other party involved in making or compiling the GICS or any GICS classifications makes any express or implied warranties or representations with respect to such standard or classification (or the results to be obtained by the use thereof), and all such parties hereby expressly disclaim all warranties of originality, accuracy, completeness, merchantability and fitness for a particular purpose with respect to any of such standard or classification. Without limiting any of the foregoing, in no event shall MSCI, S&P, any of their affiliates or any third party involved in making or compiling the GICS or any GICS classifications have any liability for any direct, indirect, special, punitive, consequential or any other damages (including lost profits) even if notified of the possibility of such damages.

## Disclaimer

The information contained in this report has been compiled by RBC Wealth Management, a division of RBC Capital Markets, LLC, from sources believed to be reliable, but no representation or warranty, express or implied, is made by Royal Bank of Canada, RBC Wealth Management, its affiliates or any other person as to its accuracy, completeness or correctness. All opinions and estimates contained in this report constitute RBC Wealth Management's judgment as of the date of this report, are subject to change without notice and are provided in good faith but without legal responsibility. Past performance is not a guide to future performance, future returns are not guaranteed, and a loss of original capital may occur. Every province in Canada, state in the U.S., and most countries throughout the world have their own laws regulating the types of securities and other investment products which may be offered to their residents, as well as the process for doing so. As a result, the securities discussed in this report may not be eligible for sale in some jurisdictions. This report is not, and under no circumstances should be construed as, a solicitation to act as securities broker or dealer in any jurisdiction by any person or company that is not legally permitted to carry on the business of a securities broker or dealer in that jurisdiction. Nothing in this report constitutes legal, accounting or tax advice or individually tailored investment advice. This material is prepared for general circulation to clients, including clients who are affiliates of Royal Bank of Canada, and does not have regard to the particular circumstances or needs of any specific person who may read it. The investments or services contained in this report may not be suitable for you and it is recommended that you consult an independent investment advisor if you are in doubt about the suitability of such investments or services. To the full extent permitted by law neither Royal Bank of Canada nor any of its affiliates, nor any other person, accepts any liability whatsoever for any direct, indirect or consequential loss arising from, or in connection with, any use of this report or the information contained herein. No matter contained in this document may be reproduced or copied by any means without the prior written consent of Royal Bank of Canada in each instance. In the U.S., RBC Wealth Management operates as a division of RBC Capital Markets, LLC. In Canada, RBC Wealth Management includes, without limitation, RBC Dominion Securities Inc., which is a foreign affiliate of RBC Capital Markets,

LLC. This report has been prepared by RBC Capital Markets, LLC. Additional information is available upon request.

**To U.S. Residents:** This publication has been approved by RBC Capital Markets, LLC, Member NYSE/FINRA/SIPC, which is a U.S. registered broker-dealer and which accepts responsibility for this report and its dissemination in the United States. RBC Capital Markets, LLC, is an indirect wholly-owned subsidiary of the Royal Bank of Canada and, as such, is a related issuer of Royal Bank of Canada. Any U.S. recipient of this report that is not a registered broker-dealer or a bank acting in a broker or dealer capacity and that wishes further information regarding, or to effect any transaction in, any of the securities discussed in this report, should contact and place orders with RBC Capital Markets, LLC. International investing involves risks not typically associated with U.S. investing, including currency fluctuation, foreign taxation, political instability and different accounting standards.

**To Canadian Residents:** This publication has been approved by RBC Dominion Securities Inc. RBC Dominion Securities Inc.\* and Royal Bank of Canada are separate corporate entities which are affiliated. \* Member Canadian Investor Protection Fund. ® Registered trademark of Royal Bank of Canada. Used under license. RBC Wealth Management is a registered trademark of Royal Bank of Canada. Used under license.

**RBC Wealth Management (British Isles):** This publication is distributed by RBC Europe Limited and Royal Bank of Canada (Channel Islands) Limited. RBC Europe Limited is authorised by the Prudential Regulation Authority and regulated by the Financial Conduct Authority and the Prudential Regulation Authority (FCA registration number: 124543). Registered office: 100 Bishopsgate, London, EC2N 4AA, UK. Royal Bank of Canada (Channel Islands) Limited is regulated by the Jersey Financial Services Commission in the conduct of investment business in Jersey. Registered office: Gaspé House, 66-72 Esplanade, St Helier, Jersey JE2 3QT, Channel Islands.

**To persons receiving this from Royal Bank of Canada, Hong Kong Branch:** This document is distributed in Hong Kong by Royal Bank of Canada, Hong Kong Branch which is regulated by the Hong Kong Monetary Authority and the SFC. This document is not for distribution in Hong Kong, to investors who are not “professional investors”, as defined in the Securities and Futures Ordinance (Cap. 571 of Hong Kong) and any rules made under that Ordinance. This document has been prepared for general circulation and does not take into account the objectives, financial situation, or needs of any recipient. Past performance is not indicative of future performance. WARNING: The contents of this document have not been reviewed by any regulatory authority in Hong Kong. Investors are advised to exercise caution in relation to the investment. If you are in doubt about any of the contents of this document, you should obtain independent professional advice.

**To persons receiving this from Royal Bank of Canada, Singapore Branch:**

This publication is distributed in Singapore by the Royal Bank of Canada, Singapore Branch, a registered entity licensed by the Monetary Authority of Singapore. This publication is not for distribution in Singapore, to investors who are not “accredited investors” and “institutional investors”, as defined in the Securities and Futures Act 2001 of Singapore. This publication has been prepared for general circulation and does not take into account the objectives, financial situation, or needs of any recipient. You are advised to seek independent advice from a financial adviser before purchasing any product. If you do not obtain independent advice, you should consider whether the product is suitable for you. Past performance is not indicative of future performance. If you have any questions related to this publication, please contact the Royal Bank of Canada, Singapore Branch.

© 2024 RBC Capital Markets, LLC – Member NYSE/FINRA/SIPC  
© 2024 RBC Dominion Securities Inc. – Member Canadian Investor Protection Fund  
© 2024 RBC Europe Limited  
© 2024 Royal Bank of Canada  
All rights reserved  
RBC1524



Wealth  
Management